

Study for a career in the health sector

Working in the health sector can provide a long and rewarding career, with many opportunities to progress. At CWA, we have a range of courses to help you reach your goals, whether you are just leaving school or want to change your profession.

SEE WHAT
YOU
CAN DO

College of
West Anglia



TRAINING FOR A CAREER IN HEALTHCARE

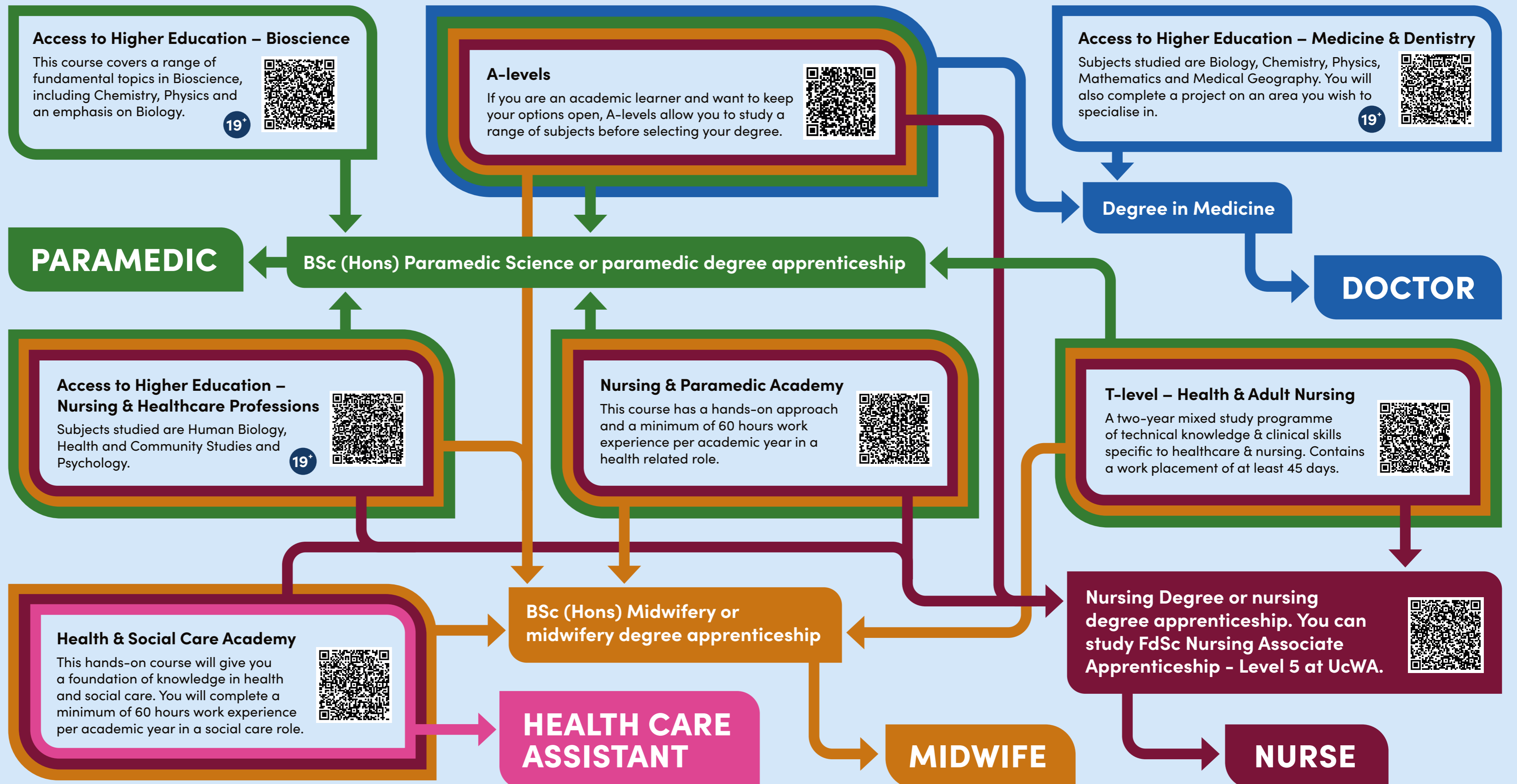
There are many rewarding careers in the healthcare sector. Here, we illustrate how studying at CWA can enable you to qualify for just five of those job roles.

Which course you select will depend on how you learn best, what your current aspirations are and the entry requirements. Scan the QR codes for more information.

Visit our website for our full range of healthcare courses, including our Level 1 & Level 2 courses, which will enable you to progress to Level 3 if you don't yet meet the entry requirements.

cwa.ac.uk/healthcare

Our Access to Higher Education Diplomas are for students aged 19+ and are validated by the Cambridge Access Validating Agency (CAVA). They are Level 3 qualifications, recognised by higher education institutions as a valid entry requirement for university, advanced apprenticeships and industry.





MILLIE MCCLAGISH
Nursing and Paramedic Academy – Level 3

“I have been interested in going into healthcare since I was young. I love the nutritional health unit and learning clinical skills the most.”

Millie has gone on to take paediatric nurse training at the University of East Anglia.



LIBBY BOUGHEN
T-level: Health and Adult Nursing

“I chose the T-level as it would give me a good opportunity to go to university. I chose CWA for the resources. I particularly enjoy doing practicals in the School of Nursing Studies. All the tutors are amazing and there to help when needed.”

Libby has gone on to study Paramedic Science - Integrated Masters (MSci) at Keele University.

The School of Nursing Studies (SoNS) is a brand new, state-of-the-art facility, funded by the Borough Council of King’s Lynn and West Norfolk and the Town Deal Board. Working in partnership with the Queen Elizabeth Hospital, King’s Lynn and Anglia Ruskin University, CWA is the first further education facility in the UK to have Laerdal SimMan 3G+ high-tech simulation mannequins. Scan the QR code to take a virtual tour.



King’s Lynn Campus
Tennyson Avenue
King’s Lynn
Norfolk PE30 2QW

Telephone 01553 761 144
Email admissions@cwa.ac.uk
Website cwa.ac.uk

Lets get social!



KAITLYN TERRY
Health and Social Care Academy – Level 3

“When I began my course, I wanted to become a health professional to help improve the lives of people recovering from an illness or accident. My course allowed me to see the range of job roles you can do with health and social care. I would like to go to university to study adult nursing.”



MARGARET HUMPHREY
Access to Higher Education – Medicine

“The course at CWA has an excellent reputation with many medical schools. I wanted to have a solid understanding of the science underpinning the degree syllabus, and as the course was influenced by the schools themselves, I knew I would be fully prepared. I am now studying the Graduate-Entry Medicine course at Cambridge University.”